

IOM National Refresh

Why the Refresh?

- In February 2020 a joint HMICFRS / HMIP inspection found that IOM had 'lost its way'.
- The report highlighted a lack of national strategic leadership and made recommendations in relation to improving consistency of the cohort of offenders while still reflecting local needs.
- A new Neighbourhood Crime strategy was published in December 2020 which adopts an evidence-based approach providing clarity and greater accountability.
- Neighbourhood crime will be the centre of IOM with the aim of ensuring swifter action and effective intervention which will hopefully reflect in communities being safer.
- The strategy incorporates a revised model for the IOM cohort consisting of three distinct cohorts: Fixed, Flex and Free.

Cheshire IOM

Integrated Offender Management

```
graph TD; IOM[Integrated Offender Management] --- MAPPA[MAPPA]; IOM --- Navigate[Navigate]; IOM --- HRU[Harm Reduction Unit]; IOM --- SOT[Sex offender team];
```

MAPPA

Navigate

Harm
Reduction
Unit

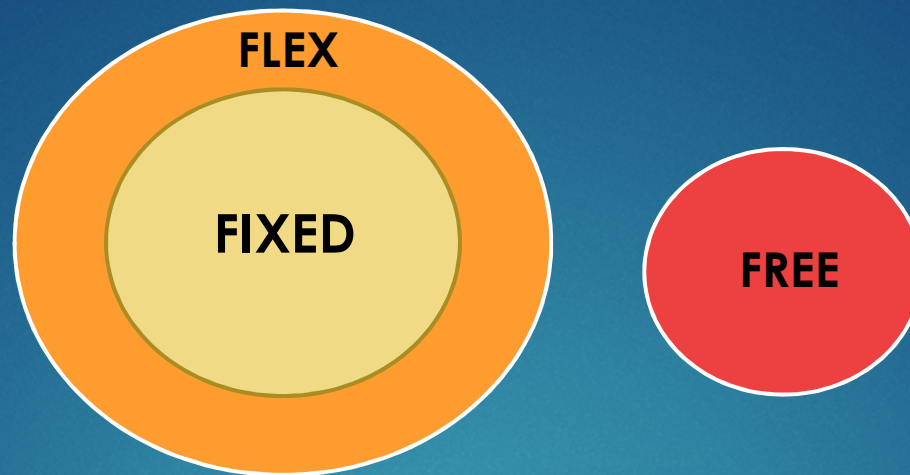
Sex offender
team

Why Neighbourhood Crime?

- Neighbourhood crime types have the highest levels of reoffending.
 - Recent figures show that 31.9% of those convicted of robbery and 52.2% of those convicted of theft reoffend within one year of release from prison, compared to 25% for all other crimes.
 - A total of 80% of all crime is created by those reoffending, a significant proportion of which is neighbourhood crime.
- Neighbourhood crime types have low levels of suspect identification.
 - In 2019, 76% of theft offences and 58% of robbery offences closed with no suspect being identified, compared to 21.2% for all other cases.

Regional and Cheshire picture

- ▶ NW Regional refresh team who are reviewing all IOM schemes across Cheshire, Merseyside, Lancashire and Cumbria
- ▶ We are in a strong position in Cheshire
- ▶ We have a well established Navigate scheme but we need consistency and buy in across all partners



FIXED

- This will be the priority cohort (60% minimum resources). Must meet 3 criteria set by the Police and Probation Service:
- Assessed as posing a high risk of reoffending by the Probation Service using Offender Group Reconviction Score (OGRS)
- Use of Office of National Statistics Crime Severity Scoring (CSS) Matrix
- Recently committed a Burglary, Robbery, Theft of or theft from motor vehicle, Theft from Person.

FLEX

- People who do not meet the Fixed criteria, but who commit the offence types and the IOM team agree would benefit from being managed by IOM.
 - E.g. Burglar who is escalating their offending but hasn't reached the CSS value.

FREE

- Groups that the IOM team and Community Safety Partners agree would benefit.
 - DA offender who'd benefit from Multi-Agency management.
 - Prolific homeless shoplifter with drug addiction needs.

Navigate caseloads

CWAC

Fixed - 11
Flex - 33
Free - 16
Total - 60

CEAST

Fixed - 11
Flex - 33
Free - 15
Total - 59

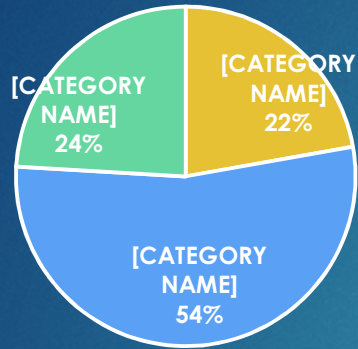
Halton

Fixed - 12
Flex - 29
Free - 13
Total - 54

Warrington

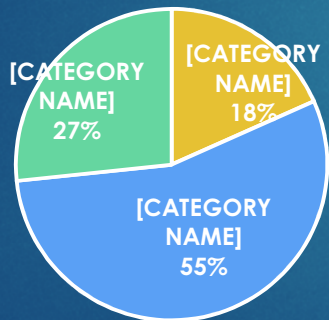
Fixed - 11
Flex - 23
Free - 9
Total - 43

HALTON Navigate Caseload



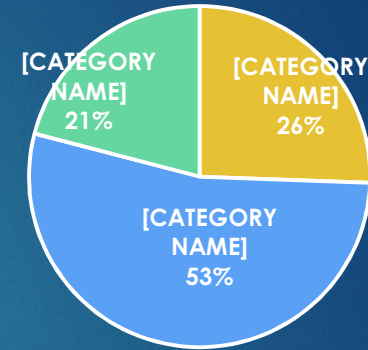
■ FIXED ■ FLEX ■ FREE

CHESHIRE WEST Navigate Caseload



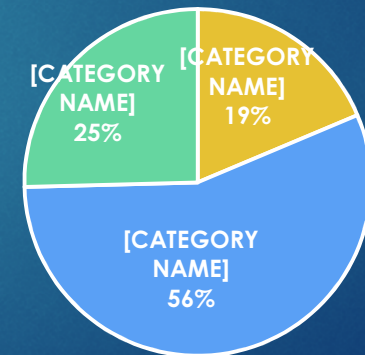
■ FIXED ■ FLEX ■ FREE ■

WARRINGTON Navigate Caseload



■ FIXED ■ FLEX ■ FREE

CHESHIRE EAST IOM CASELOAD



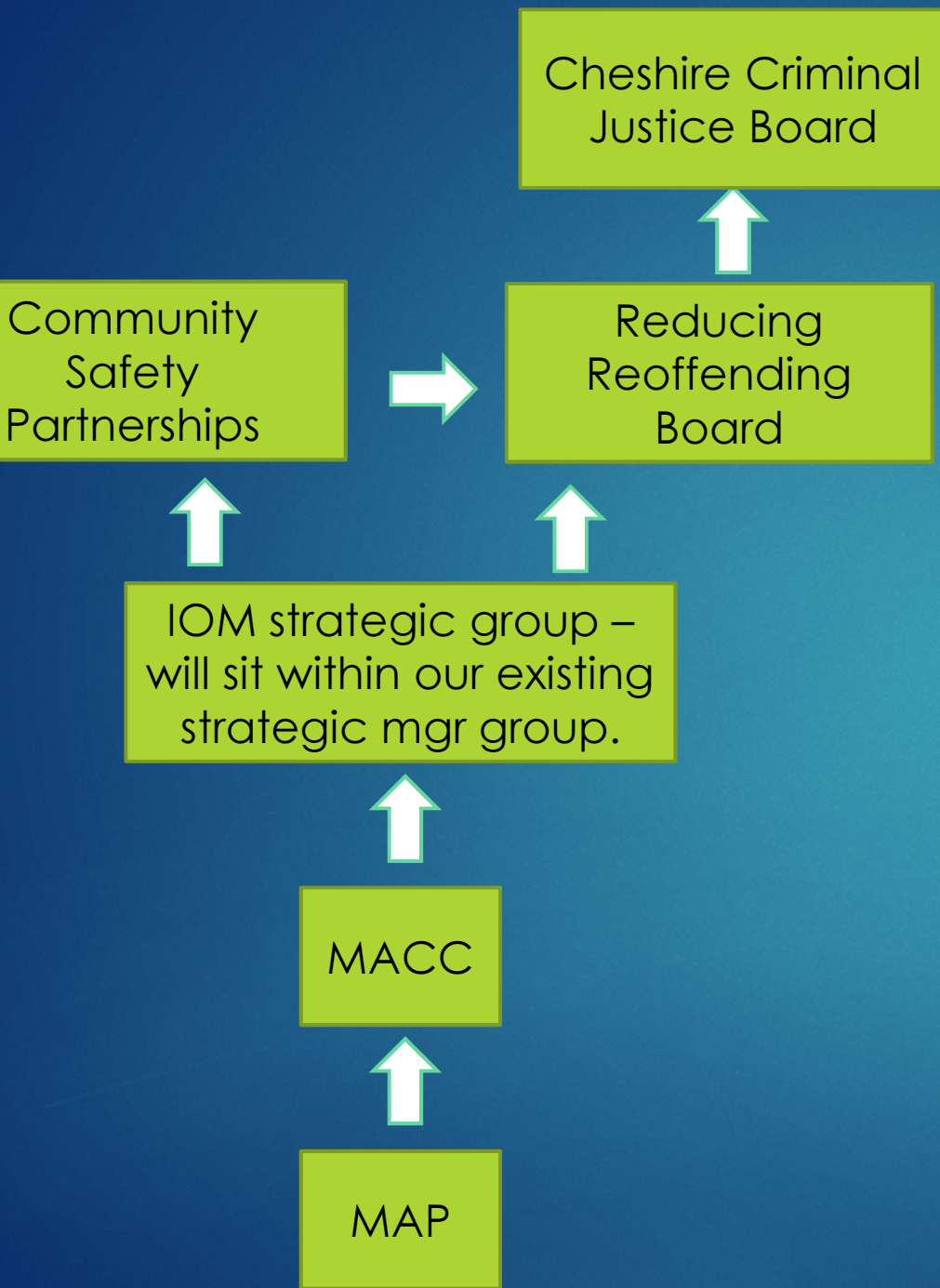
■ FIXED ■ FLEX ■ FREE

Focus of the strategy

- Reduction of 'Neighbourhood Crime'
- All Statutory IOM Nominals will have an assigned Offender Manager from both Police and Probation
- Aim for co-location of Police, Probation and service providers
- Managed offenders to have enhanced access to services
- 7 identified pathways to reduce reoffending
- Evaluation of effectiveness – reductions in volume and frequency of reoffending, risk of reoffending scores and severity of offences are all markers of success that IOM schemes will be expected to monitor.
- Governance arrangements

Governance

The IOM refresh strategy “strongly encourages police and probation leaders to build links with local authorities in order to ensure IOM is embedded into the local agenda, and links with relevant partners are facilitated at this level. Local governance should set the agenda for local IOM schemes – offering clear guidance on the processes and responsibilities for joint offender supervision between agencies.”



Issue escalation and Performance reporting to CSP / RRB:

- Local issues to CSP
- Countywide issues to RRB

Non-operational group to discuss issues / concerns / performance / successes / strategy

Multi Agency Case Conference Monthly - The new name for JAG

- Selection/deselection
- Review of current cases by exception
- Discuss thematic issues

Multi Agency Practitioner meeting Weekly / daily multi agency discussions supporting current cases

Navigate & Community Safety Partnerships

- ▶ Community safety partnerships – network of partnerships who work together to make their area safer; by reducing crime, reoffending, anti-social behaviour & supporting victims
- ▶ Supporting multi agency solutions like IOM & identifying suitable interventions
- ▶ Applying a joined up approach to problem solving for those who are causing harm and who are most prolific in their offending
- ▶ Local governance should be based on our integrated principle 'working together'

Cheshire wide engagement in Navigate

CWAC

CWAC Housing (Alison Reaney / Ray Howard)
MH services (various personnel)

Halton

HBC ASB Officer (Andrew Bailey)
CGL alcohol and drugs (Clare Lunt / Sue Grave / Victoria Whiteside)
Housing Solutions (Lucy Hargrove)
Criminal Justice Mental Health Liaison Team (June Fagan)
Plus Dane SHAP (Paula Meadows) recently started attending in May

CEAST

- CGL drug & Alcohol Services (Carl Allen & Ian Brown)
- Crewe rough sleep outreach (Jane Fox)
- Macc Homeless relief officer (Lindsay Magari)
- CE rough sleeping contract monitoring officer (Vicky Rhodes)
- Adult Safeguarding (Annette Lomas) for the last two MACC mtgs
- Emerging Futures (various personnel)

Warrington

- CGL drug & Alcohol Services (Alan Walker)
- Criminal Justice Mental Health Liaison Team (Alan Bentham)
- James Lee House (Salvation Army) accommodation provision (Mathew Davenport)
- WBC Homeless & Housing (Kate Neilson)
- Your Housing VTSS (Cath Collier)

IOM with MAPPA and MARAC

- ▶ MAPPA is the management of serious risk of harm.
- ▶ IOM (Navigate) seeks to reduce the risk of reoffending.
- ▶ Where an offender is subject to both arrangements MAPPA takes precedence and the risk is owned by MAPPA.
- ▶ The IOM team should be present at MAPPA and sighted on the Risk Assessment.
- ▶ Due to behaviours and lifestyles IOM nominals may be subject to MARAC as perpetrators or victims.
- ▶ The IOM team should be represented at MARAC to provide in depth knowledge of the nominal and support actions required.

Lessons learnt -

- ▶ Impact of TR and solutions Unified model.
- ▶ Co location – how do we achieve this?
- ▶ Positive Halton – located in CGL – Drug treatment providers.
- ▶ Multi disciplinary team in one place.
- ▶ Impact of covid.
- ▶ Macclesfield – police station
- ▶ Warrington – level of integration but not formally co located.
- ▶ Opportunities?
- ▶ What can we do to support.
- ▶ Standing agenda item for IOM at each CSP meeting.
- ▶ Prioritisation of IOM cases in terms of pathways.

Kerri Bendon

**Assistant Chief Officer
Probation Service**

Cheshire Strategic Navigate lead

KerriBendon@justice.gov.uk

Emma Davies

**Senior Probation Officer
Probation Service**

Cheshire Operational Lead

Emma.Davies6@justice.gov.uk

Louise Cherrington

**Detective Superintendent
Cheshire Constabulary**

[Louise.Cherrington@cheshire.pnn.p
olice.uk](mailto:Louise.Cherrington@cheshire.pnn.police.uk)

Richard Spedding

**IOM Inspector
Public Protection
Cheshire Police**

[richard.spedding@cheshire.pnn.polic
e.uk](mailto:richard.spedding@cheshire.pnn.police.uk)